

0.75~5.5kW 2P

50Hz : 2850rpm

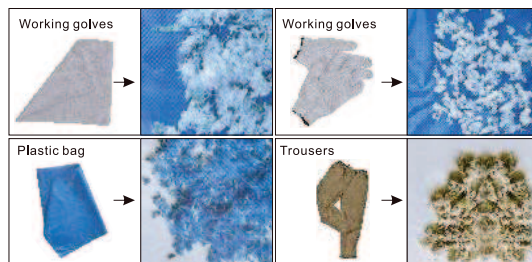
60Hz : 3450rpm

Specification

- Insulation class : F
- Protection class : IP68
- Water temperature : up to 40°C
- PH : 6 to 10
- Density of liquid : 1.3g/cm³
- Power supply :
 - three phase 380V ±10%, 50Hz
 - three phase 380V ±10%, 60Hz
 - single phase 220V ±10%, 50Hz
 - single phase 220V ±10%, 60Hz
- Motor protection : built in
- Capacity : up to 25m³/h
- Head : up to 42m
- Maximum immersion depth : 10m
- Cable length : 8m



GRINDING CAPACITY OF G PUMPS



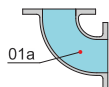
Materials of construction

Item No.	Part name	Material
01	Hose coupling	Cast iron
01a	Hose coupling	Cast iron
03	Terminal box	Cast iron
05	Upper cover	Cast iron
07	Bearing house	Cast iron
10	Seal bracket	Cast iron
11	Motor body	Cast iron
13	Pump body	Cast iron
14a	Impeller	Ductile iron
14b	Rotatory blade	High chrome alloy
16	Stationary Blade	High chrome alloy
17	Coupling adapter	Cast iron
22	Seat assembly	Cast iron
22a	Coupling seat	Cast iron
22b	Upper guide support	Cast iron
27	Stator	
28	Rotor	Shaft : AISI304SS
30	Flange	Cast iron
31a	Bearing	Ball bearing
31b	Bearing	Ball bearing
33	Motor protector	
34	Mechanical seal	Sic-Sic/Carbon-Ceramic
35	Oil seal	
47	Cable	

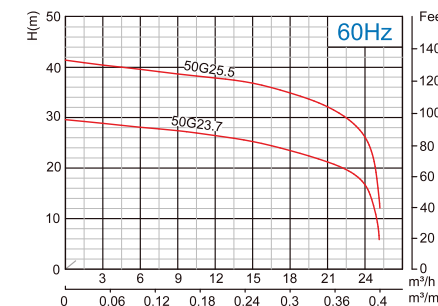
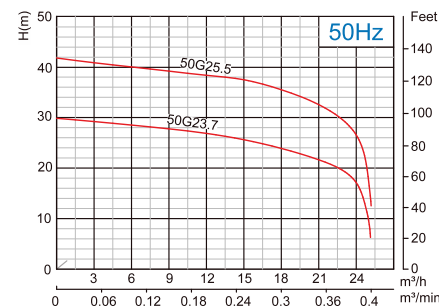
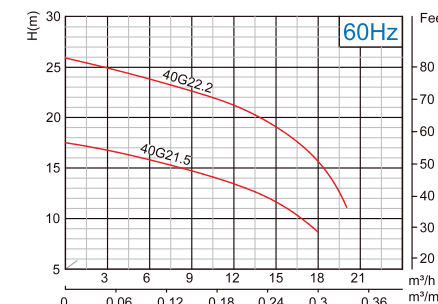
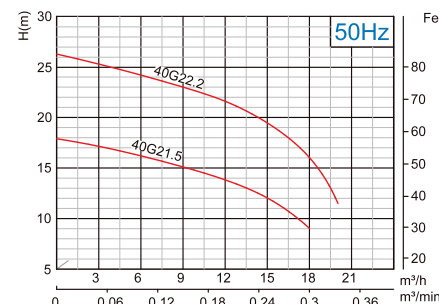
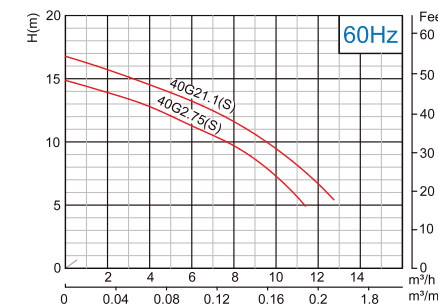
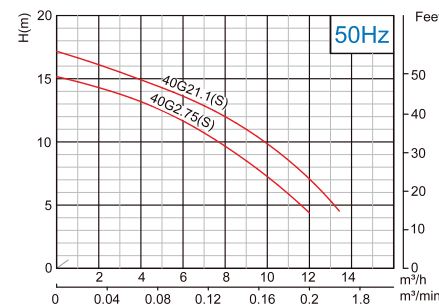
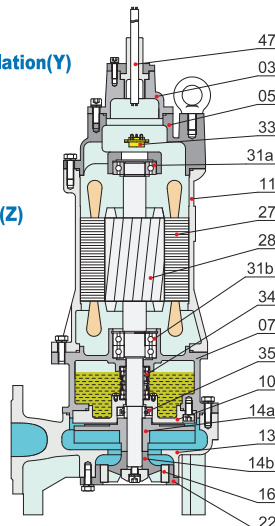
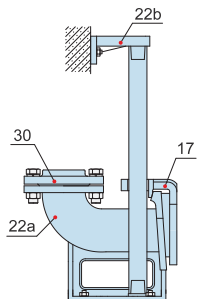
Movable Soft Pipe Installation (R)



Movable Hard Pipe Installation(Y)

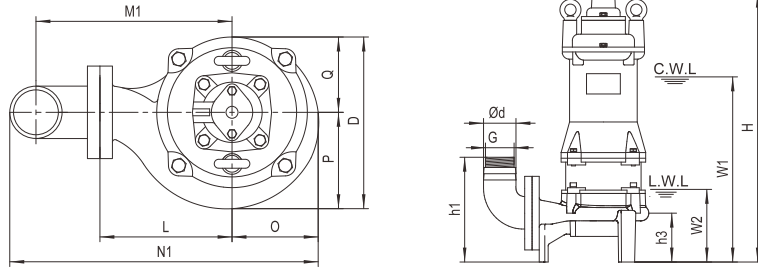


Auto-coupled Installation (Z)

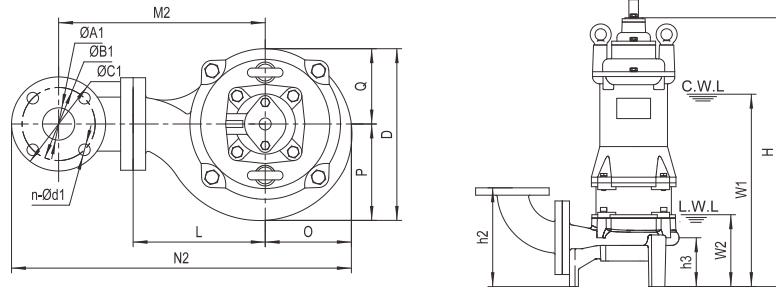


Model	Voltage		Motor power		Outlet		Rated capacity	Rated head	Max capacity	Max Head	Cable
	50Hz/60Hz	V	Current	A	kW	HP					
40G2.75	380	2	0.75	1	1½	40	8	10	12	15	4G1.0
40G2.75S	220	5.2	0.75	1	1½	40	8	10	12	15	3G1.0
40G21.1	380	2.8	1.1	1.5	1½	40	8	12	13	17	4G1.0
40G21.1S	220	7.2	1.1	1.5	1½	40	8	12	13	17	3G1.0
40G21.5	380	3.2	1.5	2	1½	40	10	14	18	18	4G1.0
40G22.2	380	5	2.2	3	1½	40	10	22	20	26	4G1.0
50G23.7	380	8.5	3.7	5	2	50	15	25	25	30	4G1.5
50G25.5	380	11.7	5.5	7.5	2	50	15	38	25	42	4G2.5

Movable Soft Pipe Installation (R)



Movable Hard Pipe Installation (Y)



C.W.L : Continuous running water level
L.W.L : Lowest running water level

Dimensions table

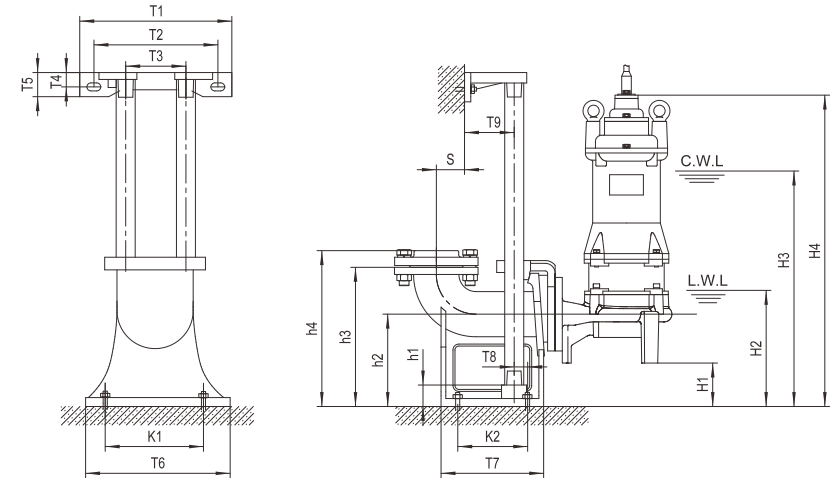
Model	Ød	G	ØA1	ØB1	ØC1	n-Ød1	h1	h2	h3	W1	W2	H	O	P	Q	L	D	M1	M2	N1	N2
40G2.75	40	—	40	100	130	4-Ø14	165	185	85	320	125	475	82	85	80	130	165	193	232	295	380
40G2.75S	40	—	40	100	130	4-Ø14	165	185	85	335	125	475	82	85	80	130	165	193	232	295	380
40G21.1	40	—	40	100	130	4-Ø14	165	185	85	335	125	475	82	85	80	130	165	193	232	295	380
40G21.1S	40	—	40	100	130	4-Ø14	165	185	85	355	125	495	82	85	80	130	165	193	232	295	380
40G21.5	40	—	40	100	130	4-Ø14	170	190	90	355	125	525	95	100	100	150	200	210	250	325	410
40G22.2	40	—	40	100	130	4-Ø14	170	190	90	375	125	545	95	100	100	150	200	210	250	325	410
50G23.7	50	G1½"	50	110	140	4-Ø14	205	200	100	405	125	610	100	105	100	155	205	220	250	345	420
50G25.5	50	G1½"	50	110	140	4-Ø14	200	195	95	440	125	635	110	115	105	160	220	225	255	360	435

Weights & Packing dimensions

Model	R						Y					
	N.W		G.W		Packing dimension		N.W		G.W		Packing dimension	
	kg	kg	mm	mm	mm	kg	kg	mm	mm	mm	mm	
40G2.75	25	26.5	515×235×220			27	28.5	515×235×230				
40G2.75S	26	27.5	515×235×220			28	29.5	515×235×230				
40G21.1	26.5	28	535×235×220			28.5	30	535×235×230				
40G21.1S	27.5	29	535×235×220			29.5	31	535×235×230				

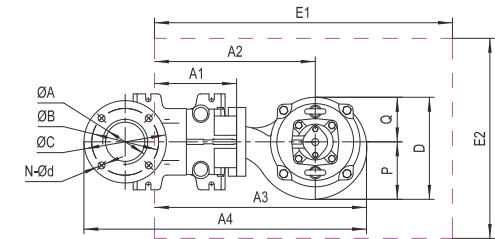
Model	R						Y					
	N.W		G.W		Packing dimension		N.W		G.W		Packing dimension	
	kg	kg	mm	mm	mm	kg	kg	mm	mm	mm	mm	
40G21.5	37.5	41	630×240×285			39.5	43	630×240×295				
40G22.2	40.5	43.5	630×240×285			42.5	45.5	630×240×295				
50G23.7	54	60	720×260×305			56	62	720×260×315				
50G25.5	67	73	750×280×315			69	75	750×280×325				

Auto-Coupled Installation (Z)



C.W.L : Continuous running water level
L.W.L : Lowest running water level

The coupling and pump will be packed individually, packing dimension and weight in table only refer to the pump, please refer to P48 to check coupling's packing dimension and weight.



Dimensions table

Auto coupling	ØA	ØB	ØC	N-Ød	T1	T2	T3	T4	T5	T6	T7	T8	T9	K1	K2	S	h1	h2	h3	h4
40-40(PN6)	Ø40 / G1½"	100	130	4-Ø14	225	185	70	18	35	110	140	5	65	65	70	60	150	115	195	215
50-50(PN6)	Ø50 / G2"	110	140	4-Ø14	265	215	105	25	42	200	215	15	67	165	135	63	25	160	250	280

Dimensions table

Model	Auto coupling	H1	H2	H3	H4	A1	A2	A3	A4	P	Q	D	E1×E2	Pump weight & packing dimension		
														N.W	G.W	Packing dimension
40G2.75	40-40(PN6)	32	160	355	510	145	275	360	485	85	80	165	650×550	23	24.5	515×235×220
40G2.75S	40-40(PN6)	32	160	370	510	145	275	360	485	85	80	165	650×550	24	25.5	515×235×220
40G21.1	40-40(PN6)	32	160	370	510	145	275	360	485	85	80	165	650×550	24.5	26	535×235×220
40G21.1S	40-40(PN6)	32	160	390	530	145	275	360	485	85	80	165	650×550	25.5	27	535×235×220
40G21.5	40-40(PN6)	25	155	385	555	145	295	390	515	100	100	200	650×550	35.5	39	630×240×285
40G22.2	40-40(PN6)	25	155	405	575	145	295	390	515	100	100	200	650×550	38.5	41.5	630×240×285
50G23.7	50-50(PN6)	60	185	465	670	155	310	410	540	105	100	205	650×550	52	58	720×260×305
50G25.5	50-50(PN6)	65	195	505	700	155	310	420	550	115	105	220	650×550	65	71	750×280×315